

# CNMEC

## Newsletter



A Touchstone Energy® Cooperative



July, 2021



Alena Brandenberger  
CEO

Summer is here and with sunshine and warm weather comes green grass, shade trees and the fragrance of flowers in bloom. The sunshine also brings out the solar marketers. The marketing of solar panels in our service area is nothing new to CNMEC. Our members have installed solar on their homes and businesses for many years. What is different is the tactics and claims made to our members.

Over the past few months, sales company Meraki Solutions, which markets solar products has been canvassing the CNMEC service area. Unfortunately, its marketing efforts suggested that CNMEC was in fact a partner with the company. This resulted in several phone calls from concerned Members. While CNMEC is supportive of any Member's decision to add solar or wind generation, we have never "partnered" with any renewable energy company in a way that could be construed as promoting one supplier over another. CNMEC is not currently, nor has ever been a partner with Meraki.

This is not the first company to use less than forthcoming or misleading sales tactics. In many cases, homeowners are led to believe the salesperson works for their electric company. The salesperson might tell the consumer he needs to look at their meter or inspect the roof or review energy bills.

They might make the case that solar energy will lower the homeowner's energy bills to the point that the solar panels will actually make them money. Tactics like these could be part of a solar power scam.

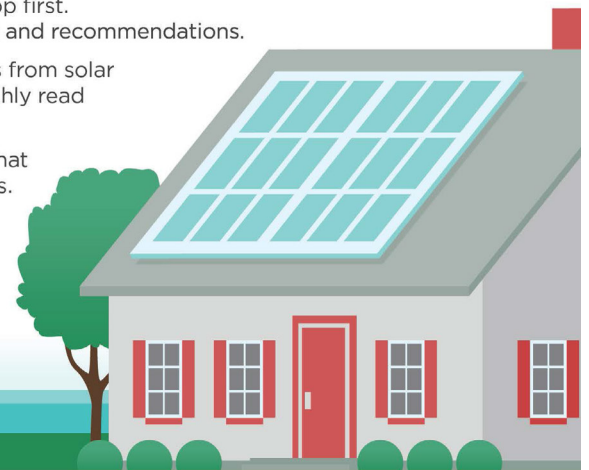
The salesman might ask for your signature or initials on an iPad or other tablet. If so, beware: they could use the signature to access your credit report or bind you to a fraudulent, long-term solar contract without your consent.

All around the country, unsuspecting consumers have become victims of solar power-related rip-offs. Don't let it happen to you.

### TIPS FOR AVOIDING SOLAR SCAMS

As the popularity of rooftop solar panels increases, so do solar scams. Here are a few tips to consider before you install a solar PV system for your home.

- Talk to your electric co-op first. They can offer guidance and recommendations.
- Get at least three quotes from solar companies, and thoroughly read their reviews.
- Avoid solar companies that use high-pressure tactics.
- Don't believe unrealistic promises.
- Only sign clear, easy-to-understand contracts.





Central New Mexico Electric Cooperative  
(505) 832-4483 – Out of Area 1-800-339-2521

[www.cnmec.org](http://www.cnmec.org)

## Fuel Cost Rate Reduction

CNMEC has received a 2% rate reduction from our power provider Tri-State G&T. This will be reflected in the fuel adjustment pass through or PCA-1 on your electric bill.

## Trees & Power Line Safety

### Trees in Power Lines

Trees growing near power lines can cause a fire, as well as an electrical hazard to anyone in contact with the tree at ground level. Trees don't have to physically touch an energized power line to be dangerous. Electricity can arc from the power line to nearby trees given the right conditions, such as a voltage surge on the line from a nearby lightning strike. This electric current can kill anyone caught near the tree and can cause a fire.

### What Can You Do to Help?

Even though our crews regularly inspect our power lines, you can help us if you notice anything such as trees or limbs that might interfere with our power lines. You can also help stop potential power line problems before they start. If you're planning to plant trees on your property, don't plant them under the power lines. Shrubs, hedges and other plants must also be kept away from power poles and off power line access roads.

### Tree Cutting and Power Line Safety

Always look for nearby power lines before beginning to cut down any tree. Call us before cutting down any tree that might fall into a power line. Never climb or attempt to fell a tree that has a limb caught in a power line. Trees that could reach a power line should never be felled by a land owner. If a tree falls into a power line, stop at once! Stay clear and call CNMEC.

If a fire starts from an electrical contact or a downed power line, contain the fire if possible, but keep all firefighting equipment and people away from the downed line. Do not use water near the downed line. Notify the local fire department and CNMEC immediately. Stay clear of the line and treat it as energized.

IN AN EMERGENCY, CALL 911.

## Energy Efficiency Tip of the Month

During summer months, run large appliances that emit heat (like clothes dryers and dishwashers) during the evening when it's cooler. This will minimize indoor heat during the day when outdoor temperatures are highest.



## Plant the Right Tree in the Right Place

For more tips on smart tree planting in your community, contact your local electric cooperative or visit [www.ArborDay.org](http://www.ArborDay.org).

Trees beautify our neighborhoods, and when planted in the right spot, can even help lower energy bills. But the wrong tree in the wrong place can be a hazard... especially to power lines.

### LARGE TREES

Height/spread of more than 40 feet, such as:

- Maple
- Oak
- Spruce
- Pine
- Birch
- Sweetgum
- Linden

### MEDIUM TREES

Height/spread of 25 to 40 feet, such as:

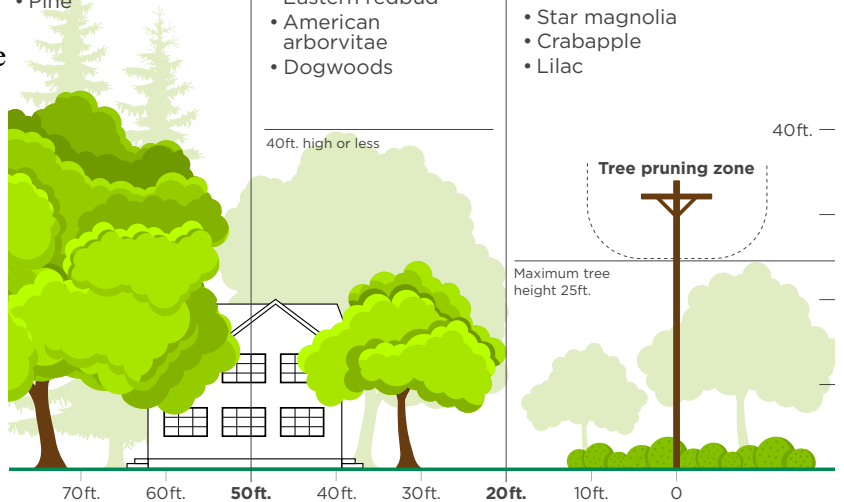
- Washington hawthorn
- Goldenrain tree
- Eastern redbud
- American arborvitae
- Dogwoods

### SMALL TREES

Avoid planting within 20 feet of power lines. When planting within 20 feet is unavoidable, use only shrubs and small trees.

Height/spread of no more than 25 feet such as:

- Star magnolia
- Crabapple
- Lilac



Be safe! Always call 811 before you dig to locate any buried utility lines.

Source: The Arbor Day Foundation and the National Rural Electric Cooperative Association