

# CNMEC

## Newsletter

A Touchstone Energy® Cooperative 

**NEW CNMEC OFFICE HOURS**  
**Monday - Thursday 7:00 a.m. - 5:30 p.m.**  
**Closed Friday**

## **Electric Co-ops Work to Get Ahead of the Blaze**

As the threat of devastating wildfires continues in the West, electric cooperatives are strengthening their efforts to help reduce the risk to their communities.

Many co-ops are aggressively clearing vegetation away from power lines, developing higher-tech ways to monitor their systems for problems and, in extreme cases where wildfires are raging, conducting temporary Public Safety Power Shutoffs to prevent sparking new blazes.

With the recent trend of longer, drier, more dangerous fire seasons some electric co-ops also turn off reclosers during fire season. A recloser is an automatic high-voltage electric switch that operates much like a circuit breaker in your home. When a household breaker trips, it will remain off until it is manually reset. A recloser will test the electric line by automatically closing to see if the problem has been removed. If the problem was only temporary, the recloser will stay closed and power will remain on. This operation is sometimes seen as a ‘blink’ at your home.”

To reduce the risk of fire, CNMEC and many other co-ops place some reclosers on “non-reclose” mode so the breaker will kick in and the line will be de-energized until crews can manually inspect the line for problems. This could cause longer, more frequent outages in some areas during fire season.

We hope our members understand that the benefits of reduced fire risk outweigh the increase in possible outages.

Recent wildfires in northern New Mexico have devastated rural communities and forced electric co-ops like Mora-San Miguel Electric who CNMEC provides outage dispatch service for, to conduct Public Safety Power Shutoffs (PSPS) in the forested areas of their system rendering many residential members powerless during recent wildfires in Northern New Mexico.

CNMEC would like to recognize our team of dispatchers for a job well done as we provided 24/7 dispatch service for Mora-San Miguel during this time.

The public can also help reduce the risks of wildfires. AccuWeather.com offers the following tips:

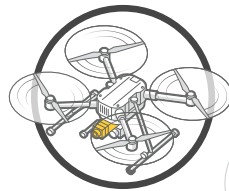
- If you see an unattended fire, immediately call 911 or your local fire department.
- Report any trees that appear to be too close to power lines, and keep your own trees and bushes regularly trimmed.
- Completely extinguish all campfires and fire pits after use. Follow all local ordinances to make sure burning a fire is allowed.
- Never throw cigarettes outside a moving vehicle or on the ground.
- Don't park your car near tall grass or weeds where engine and exhaust components can start a fire.
- Only use fireworks in clear areas. Follow all local ordinances and bans on fireworks.
- Monitor the risk of forest fires in your local area.

CNMEC

# CNMEC

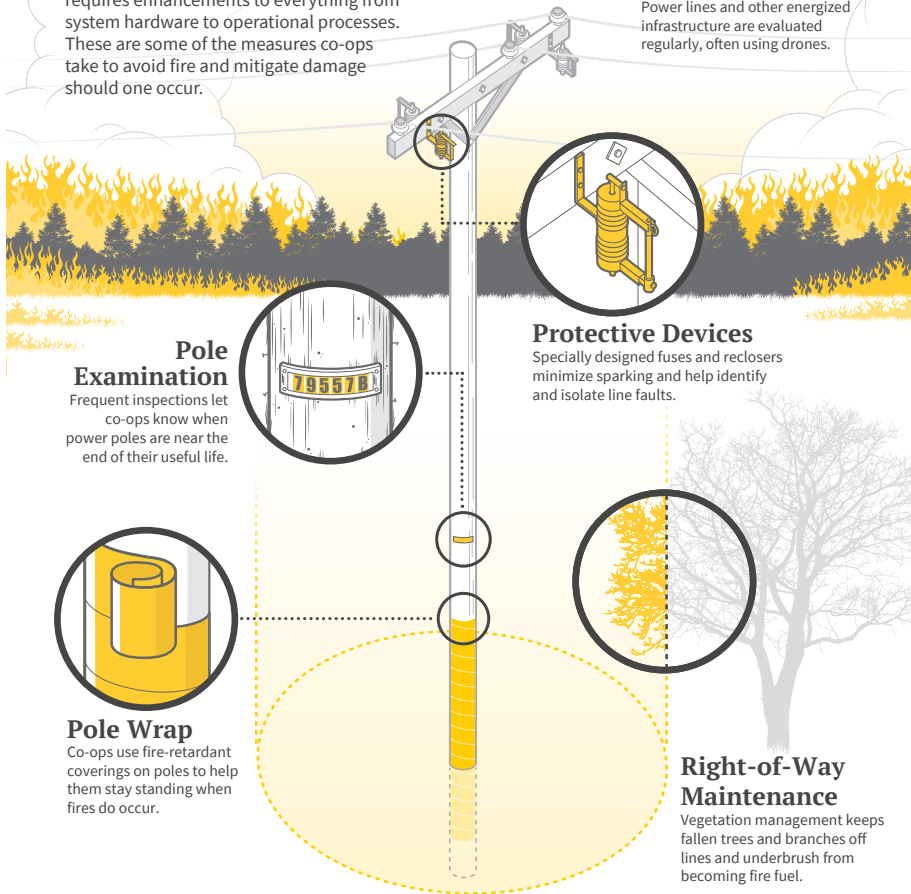
## Wildfire Preparedness

Hardening an electric grid against wildfire requires enhancements to everything from system hardware to operational processes. These are some of the measures co-ops take to avoid fire and mitigate damage should one occur.



### Hardware Inspection

Power lines and other energized infrastructure are evaluated regularly, often using drones.



## Energy Efficiency Tip of the Month

Did you know the combined use of large appliances like dishwashers, clothes dryers and washing machines account for the largest percentage of electricity use in the average U.S. home?

Take small steps to save energy when using these appliances.

Only run full loads in the dishwasher, and thoroughly scrape food from dishes before loading. Dry towels and heavier cottons separate from lighter-weight clothing, and clean the lint screen after every use. Wash clothing in cold water to save energy used to heat water.

Source: EIA and DOE



Central New Mexico Electric Cooperative  
Phone (505) 832-4483  
Out of Area 1-800-339-2521  
[www.cnmec.org](http://www.cnmec.org)