

CNMEC

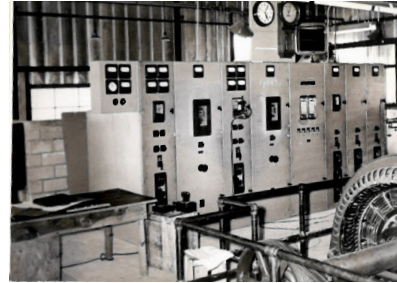
Newsletter

October 2022

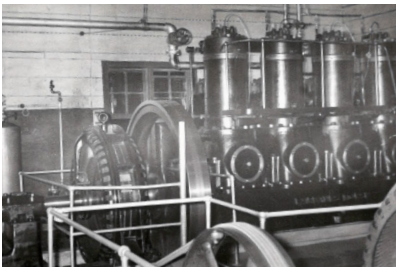
A Touchstone Energy® Cooperative 

Since October is National Co-op Month, we thought we would share a little about the history of CNMEC.

In March of 1939 seven local people filed with the New Mexico Corporation Commission to form a Rural Electric Cooperative in the local territory to bring electricity to the rural area of Corona. The seven people involved in the original incorporation were Benjamin H. Roberts of Corona, James A Garner of Carrizozo, A.E. Huntsinger of Vaughn, Alex Hindi of Duran, Archie Straughn of Vaughn, B.C. Berryman of Cedarvale and Frances Lovelace of Corona. At that time small generation plant was built in Corona.



Corona Power Plant



Vaughn Power Plant

The electric distribution facilities of the Vaughn Light and Power Company served the municipalities of Vaughn and Encino. The franchise had been granted to the company in 1929 and by 1949 the system's equipment was in need of some serious maintenance work and was overloaded for the amount of existing consumers as well as the projected growth in the future.

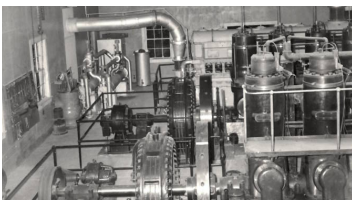
In Mountainair it is believed that electricity came to the city in 1928-1929 by a franchise granted to Mr. T. L. Nunn. Before that time, Pop Shaffer and other residents had generators to furnish electricity to their residences and businesses. In 1929 Inland Utilities obtained all electrical utility rights in both Mountainair and Estancia. Inland Utilities built a power plant in Willard and furnished electricity to Mountainair, Willard, and Estancia.

In March 1949 Central N.M. Electric Cooperative began the study to acquire the Vaugh Light and Power Company and the Inland Utility. The generation power came from generators at Willard, Vaughn, Corona, and Encino. After the official incorporation CNMEC INC. went to the Federal Government for low interest loans to fund the construction of lines to the people living in the area covered by our cooperative. CNMEC INC. was energized in 1949 and is doing business as a not-for-profit cooperative, owned by our members.



Willard Switch Board

In 1938, when the Rural Electrification Administration was formed, people in the Edgewood, Barton and Tijeras areas came together to get electricity to their rural areas. By 1940 the Sandia Electric Cooperative had secured their first loan to construct rural lines, but they had no power source. Albuquerque Gas & Electric Co made an offer to supply power, and the Stonewall Electric Company was formed. In spite of the pending war, electricity came to that area by 1942. In 1951 Central New Mexico Electric Co-op acquired Stonewall Electric Company and thus expanded lines into the Santa Fe County area.



Willard Power Plant

In 1954 Plains Generation and Transmission Cooperative, Inc. was formed and CNMEC INC., along with the other cooperatives in the state began to purchase power through Plains. In 2000 the Plains and Tri-State merger was completed, and power is now purchased from Tri-State G&T located in Westminster, Colorado.

CNMEC now serves 11 counties with 18,153 meters and 4,538 miles of line.

CNMEC

CNMIEC

What are capital credits and how do they work?



Your cooperative membership is important to us! We want to answer some questions about what capital credits are and how they work:

Q: What are capital credits?

A: Capital credits are like dividends. Since we are a member-owned cooperative, we don't have stockholders. That means members like you receive returns on your investment.

Q: Who decides when members receive capital credit retirements?

A: Your member-elected Board of Directors decides to return capital credits when it is financially possible based on factors like funding needs, operating requirements and system growth and improvements.

Q: Who receives capital credit checks?

A: We use the first-in first-out (FIFO) method to return capital credits. That means members with the longest investment get returns first. Your Board of Directors approved 1979 to be retired this year.

Q: When are capital credits sent?

A: When retirements are done, the checks are mailed in December.

If you have any questions, please e-mail capitalcredits@cnmec.org or call our offices at 505-832-4483 or 800-339-2521 and ask about Capital Credits.

Energy Efficiency Tip of the Month

With winter weather on the way, now is the time to seal drafty windows. If you can see daylight around a window frame or if you can rattle a window (movement means possible leaks), the window likely needs to be sealed.

Most window leaks can be sealed with caulk or weatherstripping, which come in a variety of compounds and materials. Visit www.energy.gov/energysaver to learn how and where to seal air leaks.

Source: energy.gov



**Central New Mexico
Electric Cooperative
Phone (505) 832-4483
Out of Area 1-800-339-2521
www.cnmec.org**